

Remote monitoring Solutions for industrial facilities



Delivering intelligent power management solutions.

Industry continues to battle operational challenges. A shortage of new workers, unplanned downtime costs, inefficient manual data collection and weak performance metrics collectively hamper process optimization.

The Brightlayer Industrial remote monitoring application enables access to data from electrical equipment across all of your locations for enterprise-wide visibility to your operations. Identify production issues and trigger remedial actions before asset failure. Inform device repair and replacement to reduce unplanned downtime. Identify energy anomalies to reduce utility costs. All within a single, trusted application.



Powering Business Worldwide



Powering Business Worldwide

Electrical products and services
PH: (877) ETN CARE
trc@eaton.com

Associated product lines

- Advanced Metering Infrastructure (AMI) solutions
- Arresters
- Cable accessories
- Caps
- Controls and relays
- Demand response solutions
- Electrical services including studies, design, training, commissioning, turnkey installation
- Fault indicators
- Fuses
- Integrated power assemblies
- Medium- and low-voltage switchgear
- Medium-voltage switchgear (oil-filled and solid dielectric)
- Medium- and low-voltage motor control centers
- Medium- and low-voltage drives
- Medium-voltage capacitors
- Medium-voltage transformers
- Medium-voltage fusing
- Medium-voltage utility transformers
- Meters and relays
- Overhead distribution equipment
- Overhead / gang-operated air break switches
- Panelboards and switchboards
- Power and distribution busway
- Power and distribution transformers
- Reclosers
- Regulators
- Smart fault indicators
- Uninterruptible power supplies
- Voltage regulators

Eaton's Crouse-Hinds, B-Line and Oil & Gas business

PH: (866) 764-5454
crousecustomerctr@eaton.com
PH: (800) 851-7415
blineus@eaton.com

Associated product lines

- Audio and visual signaling
- Cable tray and ladder systems
- CCTV systems
- Command consoles and furniture
- Conduit, cable and wire management
- Data and communication equipment
- Environmental enclosures
- Fasteners and fixings
- Industrial lighting solutions
- Meter mounting equipment
- Network racks and airflow management
- Pipe hangers and mechanical supports
- Plugs, receptacles and connectors
- Process instrumentation and protection
- Strut systems and accessories
- Safety grating
- Seismic bracing solutions

Wiring devices

PH: (866) 853-4293
custserv@
RWDDcustomersupportteam@
eaton.com

Associated product lines

- Wireless and instrumentation
- Water-tight connectors
- Wall outlets

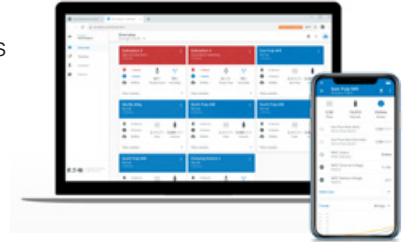
For more information or to see a demo, visit:
Eaton.com/brightlayerindustrial

The Brightlayer Industrial suite

Remote monitoring application

With Brightlayer, we've taken our more than 100 years of industry expertise and developed a foundation for providing data and insights that matter to you.

Our Brightlayer Industrial suite is built around helping you solve power management and system optimization challenges with a collection of digital solutions, insights and services. Our remote monitoring application collects and aggregates operational and maintenance data from manufacturing equipment that uses industry-standard output protocols for a consolidated view of your equipment, processes and facilities.



Peripherals that enable connectivity



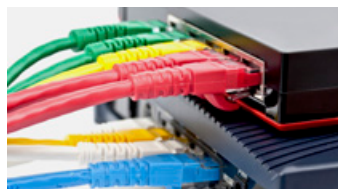
Gateways

- Gateways and accessories
- Flexible mounting options
- Class I, Division 2 rated
- One gateway services many sensors



Networking

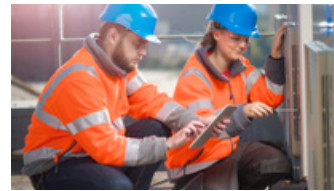
- Class I, Division 2 enclosure
- Dedicated junction box for sensor feeds
- Available standard or configurable
- Easy installation



Connected devices and sensors

- Wired and wireless output
- Configurable network
- Manufacturer agnostic
- 3rd party integration capable

Remote monitoring application



System features

- Desktop and mobile applications
- In-app notifications and text alerts
- Consolidated view of all devices
- Acknowledgment functionality
- Configurable views
- Unlimited users



Analytics and data access

- 24/7 access to data
- Event tracking and trending aids in diagnostics
- Configurable polling and backhaul frequency
- Data science algorithms correlate multiple inputs
- Quick export in multiple formats

Services



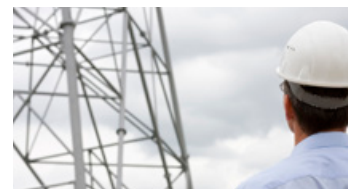
Digital design services

- Technical design review
- Consultative challenge identification
- Standard solution packages
- Engineered-to-order solutions



Cybersecurity

- Life cycle management
- Consulting services
- Risk assessments
- Solution design plans



Installation services / tech support

- Installation and commissioning on-site
- Troubleshooting
- 24-hour phone support
- System upgrades and repairs

Solutions compatible with the Brightlayer Industrial remote monitoring application

Regardless of branded equipment in your current infrastructure, our Brightlayer Industrial remote monitoring application is designed to easily integrate with existing equipment or complement new installations.

Industrial control



Intelligent motor protection

- C440, C441, C445 overload relays
- Starter relays
- Motor protection relays
- SCSR smart combination motor starter and receptacle



Variable frequency drives

- PowerXL DG1 industrial drives and EGS/EGF/EGP enclosed
- PowerXL DH1 HVAC drives and EH enclosed
- PowerXL DM1 micro drives
- S811 soft starters
- SC9000 medium-voltage variable frequency drives



Motor control centers (MCC)

- Freedom low-voltage MCC
- Ampgard medium-voltage motor control



Automation

- EasyE4 nano-PLC
- XV100 basic HMI
- XV300 advanced HMI
- XP500 industrial PC

Electrical infrastructure



Power distribution equipment

- Medium- and low-voltage switchgear
- Panelboards and switchboards
- Power transformers
- Transfer switches
- Uninterruptible Power Systems (UPS)



Industrial lighting

- Champ VMV light fixtures



Electrical metering

- Power Xpert meters
- Protective relays
- Insulgard

Component power distribution and protection



Electrical circuit protection

- Power Defense (MCCB)
- Power Defense (ICCB)
- Digitrip units



Conveyer belt control alignment and signal switches

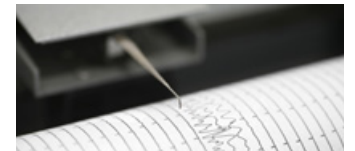
- AFU explosionproof addressability control switches



Harsh and hazardous area power distribution

- EBMX clamped explosionproof circuit breakers and motor starters
- ACE explosionproof variable frequency drives

Process measurement



Mechanical sensing

- Vibration
- Shock
- Filtration
- Bearings



Sensing

- Limit switches
- Proximity
- Capacitive
- Photoelectric



Environmental

- Temperature, humidity
- Pressure, hazardous gas detection
- Transformer temperature control

MGE OFFICE PROTECTION SYSTEMS
 CEAG MOELLER
 MTL MEM CUTLER-HAMMER
 COOPER PDI ARROW HART
 B-LINE BUSSMANN MTL
 HOLEC ULUSOY
 ARROW HART MEM BUSSMANN
 PDI POWERWARE
 MEM BUSSMANN
 ARROW HART CEAG
 MOELLER MTL POWERWARE
 CEAG INNOVATIVE SWITCHGEAR SOLUTIONS
 MTL B-LINE
 HERNIS
 COOPER
 B-LINE
 ARROW HART
 MOELLER
 CEAG MEM
 MTL
 COOPER
 HERNIS POWERWARE HOLEC
 BUSSMANN MTL ARROW HART
 B-LINE COOPER
 MOELLER CEAG HOLEC MOELLER
 MTL POWERWARE CEAG
 MEM MGE OFFICE PROTECTION SYSTEMS
 HERNIS POWERWARE
 COOPER ULUSOY CROUSE-HINDS
 CEAG ARROW HART COOPER
 PDI MOELLER CROUSE-HINDS
 INNOVATIVE SWITCHGEAR SOLUTIONS

**MORE POSSIBILITIES.
POWERFUL SOLUTIONS.**

Eaton has been serving the power management needs of our customers for more than a century. Over the years, we have expanded our expertise and portfolio of products and services by uniting some of the world's most respected names with Eaton's strong heritage of innovation.

Our goal is simple; to provide unique solutions across a wide range of markets that keep businesses on the leading edge of change. That's the power of One Eaton.

Eaton
 1000 Eaton Boulevard
 Cleveland, OH 44122
 United States
 Eaton.com

Eaton.com



© 2021 Eaton
 All Rights Reserved
 Pub No. SA083170EN / GG
 May 2021

Eaton is a registered trademark.
 All other trademarks are property
 of their respective owners.

Follow us on social media to get the latest product and support information.

