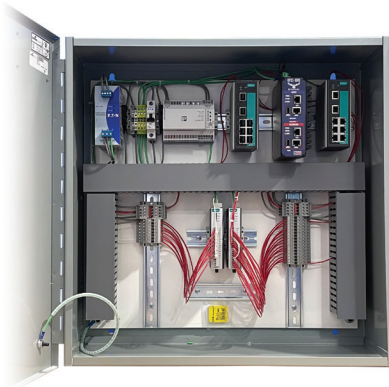




Brightlayer Industrial aggregator box



Protect electrical components from harsh, industrial environments with Eaton's Brightlayer Industrial aggregator box.

Description

The Eaton Brightlayer Industrial aggregator box is a panel that collects all of your data points into a single location for transfer to the Brightlayer cloud. Each enclosure contains a variety of input modules with dedicated input terminals used for connection of power and input wiring.

Standard components

- Flat subpanel
- Perforated DIN rail
- Eaton circuit breaker
- Terminal block
- Ground block standard, lug optional
- Modular fuse
- 24 Vdc power supply
- 18 and 14 AWG, 600 V SIS wire
- Category 5 and 6 Ethernet available
- Built to UL® 508A standards
- Wire markers
- ANSI 61 gray with white back panel

Supported protocols

- Modbus® RTU
- Modbus TCP

Environmental ratings

- NEMA® Type 1, 3R, 4, 12 and Type 13
- IEC 60529
- IP66

Features

- Wall mountable
- Cellular communications, multiple providers available (North America only)
- Hinged door opens 180 degrees
- Door latches open/close with screwdriver
- Ground stud on door and body
- Mounting tabs included
- Nine ¾-inch conduit knockouts with plug, three per side and bottom

Note: Additional features and options are available upon request. Please consult your Eaton representative.

Optional inputs/outputs

Each analog input module accommodates from one to eight 0–10 Vdc or 4–20 mA inputs. Each digital input module accommodates from one to 16 dry contact inputs. Each module requires its own IP address and is configurable.

- Analog inputs (8)
- Digital inputs (16)
- Ethernet switch (8 ports)
- DTS DC12 SMA3 power submeter
- 24 Vdc battery backup

Cybersecurity

- Secure cloud
- Managed Ethernet switches
- Industrial firewalls
- Data diodes

Cybersecurity services are available at <https://www.eaton.com/us/en-us/catalog/services/cybersecurity-services.html>

Technical specifications

Description	Specification
Input	4–20 mA, 0–10 Vdc or dry contact, power meter monitoring
Output	Modbus TCP
Dimensions (H x W x D)	
Medium	16 x 16 x 8 inches
Large	24 x 24 x 8 inches
Estimated weight	25 lb
Power	100–240 Vac, 5 A, 50–60 Hz
Operating environment	–10 to +60 °C (+14 to +140 °F), 5%–95% RH (noncondensing)



Eaton
1000 Eaton Boulevard
Cleveland, OH 44122
United States
Eaton.com

© 2021 Eaton
All Rights Reserved
Printed in USA
Publication No. TD090003EN / Z25372
December 2021

Follow us on social media to get the latest product and support information.



Eaton is a registered trademark.

All other trademarks are property of their respective owners.