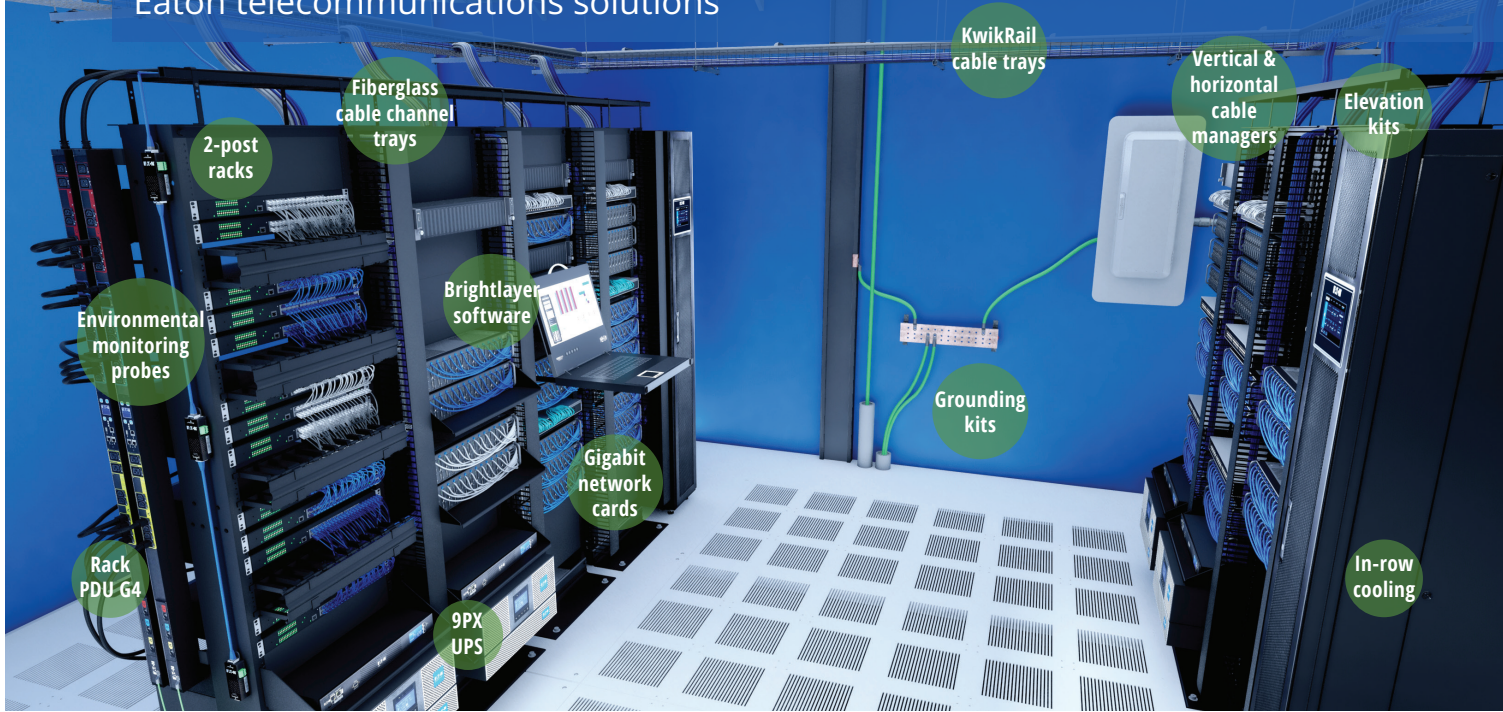


## Eaton telecommunications solutions



## Telecommunications room

A well-organized and maintained telecommunications room is not just about ease of use. It's about creating an environment where your network can thrive. It's about investing in the health and reliability of your network and the productivity of your business. A comprehensive telecom solution from Eaton, which covers everything from secure wallmount racks and cable management to grounding bars and the backup power needed to outlast most outages, ensures that your telecommunications room is organized, protected and managed.



### Save time

- 2-post racks assemble in just minutes using only basic hand tools, making standing up a new telecommunications room or adding additional rack space a quick and painless project.
- Make servicing equipment easier and faster with well-organized cable management, both in the racks and overhead.



### Save money

- Deploying Eaton UPSs and PDUs properly sized for the load guards against productivity-crushing downtime.
- Eaton's large portfolio of cables – copper and fiber in a variety of colors, speeds and lengths from 6 in. to 1,000 ft. bulk spools – means never having to settle for cable that's not quite right for the job.



### Reduce risk

- Proper cable management makes it easy to identify which cables are connecting equipment, reducing the risk of unintentional disconnects.
- Gain a full view of your telecommunications room – and respond to alarms – from virtually anywhere with Brightlayer remote monitoring and management software for UPSs, PDUs and connected equipment.



Powering Business Worldwide

# Telecommunications solutions

## Organize

### 2-post rack

- Seismic or standard available
- 19" or 23" rack width
- Up to 108" tall (58U)
- Assembles in under 10 minutes

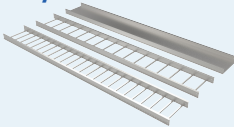


### Fiberglass cable channel tray

- Coated surface veil helps ensure a resin-rich surface and ultraviolet resistance
- Stands up to caustic, harsh and marine environments
- Other options available for environments of all types and scale

### KwikRail cable tray

- Cable management for 12A and 12B load classes
- Innovative design is fast and easy to modify in the field



### Vertical and horizontal cable managers

- Runways, ladders and accessories to help manage, organize and identify runs between racks and enclosures
- Gives the IT environment a professional appearance and helps reduce heat buildup around cable bundles

### Elevation kits

- Provide additional space between the top of racks and standard runway attachment devices to optimize the cable pathway
- UL classified and meets or exceeds TIA/EIA standards for cable pathways

## Protect

### Eaton 5PX G2 line-interactive UPS

- Up to 3kVA
- Lead-acid batteries
- Can pair with up to 4 external battery modules (EBMs) for additional runtime

### Eaton 9PX online double-conversion UPS

- Up to 11kVA
- Lead-acid or lithium-ion batteries
- Can pair with up to 4 EBMs for additional runtime
- Select models are bundled with the Eaton Gigabit Network card, compliant with both UL and IEC cybersecurity standards



### Eaton rack PDU G4

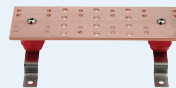
- Basic, metered input or managed technologies
- 5-23kW power rating
- 0U vertical rackmount
- Includes high-retention C39 outlets that accept both C14 and C20 plugs

### In-row cooling

- Up to 88,000 BTU
- Slim profile fits easily between racks or at the end of rows
- Configurable side or front airflow discharge
- Other options available, including portable and rackmount cooling units

### Grounding kits

- Copper main grounding bar
- Used as a central consolidation point for telecommunications and other low-voltage systems within the room



## Manage

### Gigabit network card

- Improved cybersecurity protection
- Zero-trust architecture and zero-touch provisioning
- Can be purchased separately or bundled with the UPS
- Network interface comes preinstalled with metered input and managed PDUs



### Environmental monitoring probe

- Protect sensitive equipment from heat and humidity
- Daisy-chain up to three units to monitor the environment at different levels within the rack
- Connect additional sensors to monitor smoke, water and door opens



### Brightlayer remote management software

- Remotely monitor and manage connected equipment
- Speed up troubleshooting with meaningful alerts
- View and manage all devices across all locations on a single pane of glass



For more information, please visit [Eaton.com/Verticals](https://www.eaton.com/Verticals)

**Eaton**  
1000 Eaton Boulevard  
Cleveland, OH 44122  
United States  
[Eaton.com](https://www.eaton.com)

© 2024 Eaton  
All Rights Reserved  
Printed in USA  
Publication No. 24-04-167  
June 2024

Eaton is a registered trademark.

All other trademarks are property of their respective owners.

Follow us on social media to get the latest product and support information.

