

# Eaton HDX PDU G4

Up to 36 kW per rack PDU with advanced power management and industry-leading cybersecurity.



*Powering Business Worldwide*

# High-density power distribution

Eaton HDX PDU G4 provides enterprise-quality power distribution to ultra-high-density equipment within a rack, enabling data center and IT managers to simplify installation, enhance operation and maximize control of their environment. Eaton rack PDUs with advanced power management are designed to save time, save money and reduce risk.



## 1 Ultra-high-density power

HDX PDU G4 delivers power ratings up to 36 kW (100A) for GPU-intensive applications like HPC, supercomputing, generative AI and high-frequency trading that require extremely high power density.

## 2 Advanced power management

Features like outlet-level monitoring and remote management help you increase efficiency, reduce costs, maintain uptime and improve performance throughout your IT infrastructure.

## 3 Industry-leading cybersecurity

Industry-leading cybersecurity features like zero-trust architecture, zero-touch provisioning and a user-configurable firewall make HDX PDU G4 a security asset on enterprise networks instead of a liability.

## What this means for you

### Save time

- Configure PDUs and keep them up to date with zero-touch provisioning.
- Simplify installation with toolless and flexible mounting options.
- Reboot unresponsive devices without requiring site visits or local IT staff assistance.
- Manage diverse power assets worldwide from a central location.
- Automate M2M interactions with RESTful API.

### Save money

- Increase power capacity per rack PDU so racks in GPU-intensive applications can be fully populated.
- Monitor outlet-level power to improve power visibility, increase efficiency and reduce costs.
- Cascade up to 32 PDUs per network port to reduce network infrastructure costs up to 97%.
- Gain insights needed to optimize operations and manage costs.

### Reduce risk

- Maximize cybersecurity with zero-trust architecture and user-configurable firewall.
- Power off unused outlets remotely to prevent unauthorized use.
- Prevent accidental disconnection with integrated plug retention.
- Increase critical system runtime with strategic load shedding.
- Proactively identify and automate actions to help prevent IT equipment downtime.

# Easy deployment

Eaton's HDX PDU G4 is distinguished for quality, dependability, scalability, versatility and cybersecurity. The versatile PDU G4 platform provides enterprise-quality power distribution, versatile form factors and advanced power management.



## Lightweight aluminum chassis

- Reduces weight compared to steel for easier installation and reduced shipping costs.
- Provides better thermal performance in high-density environments.
- Offers better electrical conductivity for improved grounding.

## Flexible mounting options

- 0U PDUs mount vertically, providing high outlet density without using rack space.
- Toolless mounting buttons are preinstalled to reduce installation time.
- Alternating phase outlets are evenly distributed for easy cable routing.

## Comprehensive data center solutions

- In addition to a full line of rack PDUs, Eaton provides a single source for all the products, services and support you need for your data center.
- With up to 54 inches of usable depth and a weight capacity of 5,000 pounds, Eaton's heavy-duty SmartRack® enclosures are perfect for GPU-based servers in high-density generative AI applications. Learn more at [Eaton.com/HDRack](https://www.eaton.com/HDRack).
- Additional solutions include UPS systems, floor-standing PDUs, automatic transfer switches, aisle containment, environmental sensors, busway systems, KVM switches, console servers, network cables, power cords, cable management, surge protection, cooling, software and services. Learn more at [Eaton.com/DataCenter](https://www.eaton.com/DataCenter).

# Key applications

## GPU-intensive enterprise data center

- Up to 36 kW per PDU for GPU-intensive applications like HPC, supercomputing, generative AI and high-frequency trading
- Outlet-level monitoring and remote management
- Time-saving remote power cycling from the operations center
- Measurement of Level 3 PUE (power usage effectiveness)
- Best-in-class cybersecurity



## Colocation data center

- Up to 36 kW per PDU for high-density applications
- Control of unused outlets to prevent unauthorized use
- Billing-grade power monitoring for billing customers per usage
- Measurement of Level 3 PUE
- Best-in-class cybersecurity



## Edge

- Remote power cycling without requiring local IT staff assistance
- Control of unused outlets to prevent unauthorized use
- Advanced LCD pixel display for local monitoring and simple setup
- Optional environmental monitoring probes
- Best-in-class cybersecurity





# Advanced power management

## Measure power consumption at the outlet level

- **Acquire** more accurate data by measuring power at the outlet level.
- **Analyze** detailed power data to assist decision-making and IT deployment.
- **Compare** efficiency to make smart choices and reduce consumption.



From meter screen, select outlets...

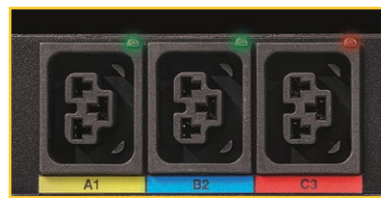
Select specific outlet...

View live power levels.

- **Measure Level 3 PUE** to provide an accurate view of how effectively power is being used for connected IT equipment.

## Individual outlet control

- Remotely control and power cycle connected devices.
- Save time and reduce costs by minimizing site visits.
- Provide sequential startup to manage inrush current.
- Shed nonessential loads strategically to increase UPS runtime of critical equipment during outages.
- Turn off outlets to prevent unauthorized devices from causing overloads.



Green LED indicates power on to outlet.  
Red LED indicates power off to outlet.

## Flexible AC input options

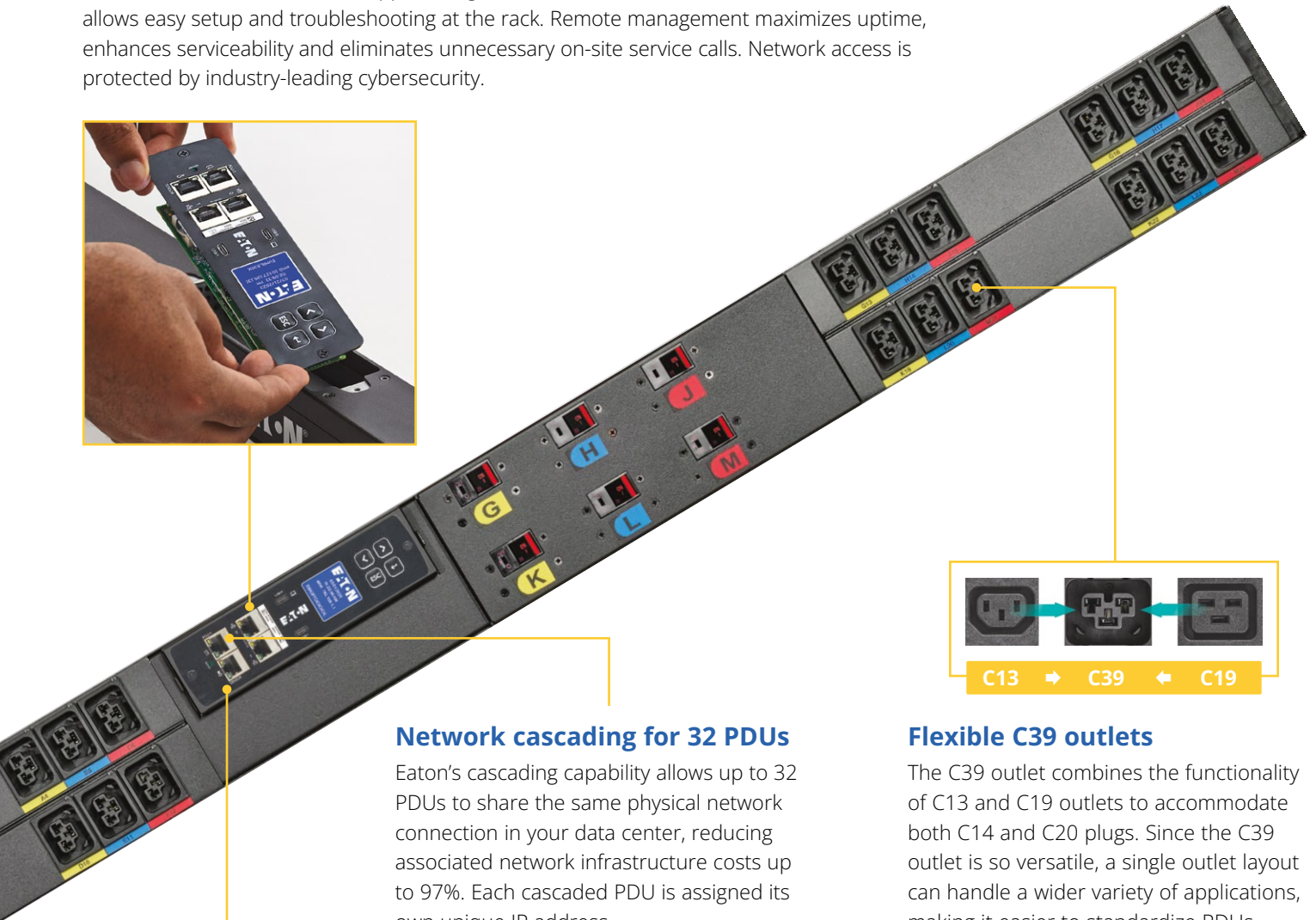
HDX PDU G4 offers a variety of corded and hardwired input options.

## Color-coded breaker and outlet sections

Alternating phase outlets distribute power evenly across outlet groups for balanced loading across circuits and phases. Circuit breakers and corresponding outlets are distributed across the length of the PDU for easy cable routing.

## Network module with industry-leading cybersecurity

HDX PDU G4 includes a hot-swappable Gigabit Network Module (GNM). The menu-driven LCD allows easy setup and troubleshooting at the rack. Remote management maximizes uptime, enhances serviceability and eliminates unnecessary on-site service calls. Network access is protected by industry-leading cybersecurity.



### Network cascading for 32 PDUs

Eaton's cascading capability allows up to 32 PDUs to share the same physical network connection in your data center, reducing associated network infrastructure costs up to 97%. Each cascaded PDU is assigned its own unique IP address.

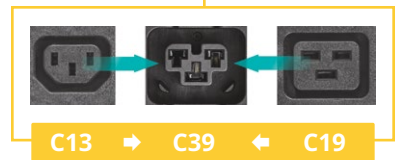
### Environmental monitoring probe

Connect up to three optional environmental monitoring probes (EMPDT1H1C2) to collect temperature and humidity readings in the rack environment and monitor environmental data remotely. You can also monitor the status of contact closure devices, such as door switches and alarms.



### Billing-grade power monitoring

HDX PDU G4 provides  $\pm 1\%$  power usage accuracy for departmental billing or customer billing in colocation data centers. It effectively measures usage for all outlets or individual outlets. Granular power usage data also aids budgeting, cost justifications and equipment evaluations.



### Flexible C39 outlets

The C39 outlet combines the functionality of C13 and C19 outlets to accommodate both C14 and C20 plugs. Since the C39 outlet is so versatile, a single outlet layout can handle a wider variety of applications, making it easier to standardize PDUs.

### Ultra-high-density power

HDX PDU G4 delivers power ratings up to 36 kW (100A) for GPU-intensive workloads and other advanced applications that require extremely high power density. Providing more power per rack PDU allows racks to be fully populated with servers so valuable data center white space doesn't go to waste.

### High-temperature operation

HDX PDU G4 operates in temperatures up to 140°F (60°C) without power derating. This supports high power density, hot-aisle containment and industrial applications while helping to reduce cooling costs.

# Remote monitoring and control

HDX PDU G4 allows you to view and manage your IT equipment remotely for greater convenience and peace of mind.



For smaller environments, you can connect to PDUs using a standard web browser and receive email alerts. For larger deployments spanning multiple locations, HDX PDU G4 integrates smoothly via SNMP or MQTT with digital solutions from our Brightlayer Data Centers suite. This includes

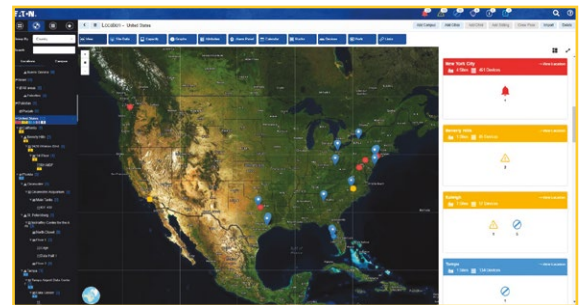
**Distributed IT Performance Management (DITPM)** and **Data Center Performance Management (DCPM)** software, as well as our cloud-based **Remote Monitoring Service**, also known as PredictPulse™, which is an around-the-clock service that aggregates data from your PDUs and dispatches an Eaton field technician when a critical event occurs.

**Distributed IT Performance Management** software provides deep intelligence into network-connected equipment, such as rack PDUs and UPS systems, spread across multiple sites. This allows you to manage and control assets installed at your remote locations, as well as proactively identify and automate actions to prevent IT equipment downtime.

**Data Center Performance Management** software allows you to maximize IT application uptime while minimizing capital and operating expenditures. It monitors and manages your power, space, connectivity and cooling resources across one or more facilities while charting trends, sending alerts and generating reports. It provides the insights you need to optimize your operations over time so you can increase your data center's performance while managing costs.

## Both software solutions provide powerful capabilities when used with HDX PDU G4, including:

- ✓ **Power load insights** – Load balancing A/B feeds and failover analysis help maintain uptime and utilize capacity effectively.
- ✓ **Capacity expansion** – Configurable dashboards help you understand utilization to provision new equipment quickly.
- ✓ **Power utilization reporting** – Real-time reports and trend charts on power usage, such as PUE, power capacity and other efficiency metrics, help you identify inefficiencies and optimize energy use.
- ✓ **Bulk configuration** – Push configuration changes to PDUs in minutes to save time and keep your organization safer from cybersecurity vulnerabilities.
- ✓ **Real-time alerts** – Circuit breaker alarms, over-capacity alarms and outlet alarms for on/off detection are prioritized by severity and escalated when needed.
- ✓ **Environmental and rack data support** – View thermal maps based on temperature probes or rack-level power draw to help optimize cooling efficiency and performance.



## Validated power management for virtualization

Eaton is the leader in power management for virtualization platforms and has more than 500 hours invested in testing with alliance partners like Cisco, Dell, HPE, NetApp, Nutanix, Scale Computing and VMware. We've done the heavy lifting by validating our power management offering on leading IT platforms to increase compatibility, efficiency and reliability

Learn more at [Eaton.com/alliances](https://www.eaton.com/alliances).





# Industry-leading cybersecurity

Industry-leading cybersecurity features like zero-trust architecture, zero-touch provisioning and a user-configurable firewall make HDX PDU G4 a security asset on enterprise networks instead of a liability. **Eaton offers the only rack PDUs on the market with all these critical cybersecurity features.**

## Zero-trust architecture

- Minimizes cybersecurity vulnerabilities through hardware root of trust, enabling secure boot and complete chain of trust with private hardware key encryption.
- Network card can only be upgraded by genuine Eaton firmware.
- USB-C port enables direct computer connection to the PDU control module while protecting against non-compliant devices.

## Zero-touch provisioning

- Automatically configures networked rack PDUs to save time and reduce errors in large-scale deployments.
- Makes it easier to keep PDUs up to date with the latest firmware and security updates.
- Firmware updates are free of charge and do not require a support contract.

## User-configurable firewall

- Reduces organization's attackable surface area and helps meet network/security compliance requirements.
- Supports IP white list.

## RESTful API

- Allows organizations to easily integrate networked PDUs with native systems and automate M2M interactions.



# Technical specifications

Part number	PDU type	AC input connection	Cord length	Phase	Voltage	Maximum current <sup>(3)</sup>	Power rating	Total outlets (C13/C19/C39) <sup>(4)</sup>	Dimensions (H x W x D)
<b>Managed HDX PDU G4 (Provides advanced remote management with outlet-level monitoring and control.)</b>									
EMAGFFA4A4A4A4L	MA	560P6W	6 ft.	3P	240/415V Wye <sup>(2)</sup>	60A	20 kW	48 (24/24/0)	76 x 4.1 x 2.5 in.
EMAGFFA5A2A5A2L	MA	560P6W	6 ft.	3P	240/415V Wye <sup>(2)</sup>	60A	20 kW	54 (42/0/12)	76 x 4.1 x 2.5 in.
EMAGFFA5A5A5A5L	MA	560P6W	6 ft.	3P	240/415V Wye <sup>(2)</sup>	60A	20 kW	48 (24/0/24)	76 x 4.1 x 2.5 in.
EMAGFFC2C2C2C2L	MA	560P6W	6 ft.	3P	240/415V Wye <sup>(2)</sup>	60A	20 kW	48 (48/0/0)	69.4 x 4.1 x 2.5 in.
EMAGFFC3C3C3C3L <sup>(1)</sup>	MA	560P6W	6 ft.	3P	240/415V Wye <sup>(2)</sup>	60A	20 kW	36 (24/0/12)	69.4 x 4.1 x 2.5 in.
EMAGFFC4C4C4C4L <sup>(1)</sup>	MA	560P6W	6 ft.	3P	240/415V Wye <sup>(2)</sup>	60A	20 kW	24 (0/0/24)	69.4 x 4.1 x 2.5 in.
EMAGLFA5A2A5A2L	MA	460P9W	6 ft.	3P	200-240V Delta	60A	20 kW	54 (42/0/12)	76 x 4.1 x 2.5 in.
EMAGLFA5A5A5A5L	MA	460P9W	6 ft.	3P	200-240V Delta	60A	20 kW	48 (24/0/24)	76 x 4.1 x 2.5 in.
EMAGLFC2C2C2C2L	MA	460P9W	6 ft.	3P	200-240V Delta	60A	20 kW	48 (48/0/0)	69.4 x 4.1 x 2.5 in.
EMAGLFC3C3C3C3L	MA	460P9W	6 ft.	3P	200-240V Delta	60A	20 kW	36 (24/0/12)	69.4 x 4.1 x 2.5 in.
EMAGLFC4C4C4C4L	MA	460P9W	6 ft.	3P	200-240V Delta	60A	20 kW	24 (0/0/24)	69.4 x 4.1 x 2.5 in.
EMAPFXTA2A2A2L	MA	560P6W	10 ft.	3P	240/415V Wye <sup>(2)</sup>	60A	20 kW	45 (45/0/0)	84 x 2.05 x 2.2 in.
EMAPFXTA2A2E2L	MA	560P6W	10 ft.	3P	240/415V Wye <sup>(2)</sup>	60A	20 kW	51 (51/0/0)	90.2 x 2.05 x 2.2 in.
EMAPFXTA2A2E4L	MA	560P6W	10 ft.	3P	240/415V Wye <sup>(2)</sup>	60A	20 kW	48 (42/6/0)	90.2 x 2.05 x 2.2 in.
EMAPFXTA3A3A3L	MA	560P6W	10 ft.	3P	240/415V Wye <sup>(2)</sup>	60A	20 kW	36 (27/9/0)	84 x 2.05 x 2.2 in.
EMAPFXTA4A2A2L	MA	560P6W	10 ft.	3P	240/415V Wye <sup>(2)</sup>	60A	20 kW	42 (36/6/0)	84 x 2.05 x 2.2 in.
EMAPFXTA4A2E2L	MA	560P6W	10 ft.	3P	240/415V Wye <sup>(2)</sup>	60A	20 kW	45 (33/12/0)	90.2 x 2.05 x 2.2 in.
EMAPFXTA4A4A2L	MA	560P6W	10 ft.	3P	240/415V Wye <sup>(2)</sup>	60A	20 kW	39 (27/12/0)	84 x 2.05 x 2.2 in.
EMAPFXTA4A4A4L	MA	560P6W	10 ft.	3P	240/415V Wye <sup>(2)</sup>	60A	20 kW	36 (18/18/0)	84 x 2.05 x 2.2 in.
EMAGECA5A2A5A2L	MA	Hardwired	None	3P	240/415V Wye <sup>(2)</sup>	64A	27 kW	54 (42/12/0)	76 x 4.1 x 2.5 in.
EMAGECA5A5A5A5L	MA	Hardwired	None	3P	240/415V Wye <sup>(2)</sup>	64A	27 kW	48 (24/0/24)	76 x 4.1 x 2.5 in.
EMAGECC2C2C2C2L	MA	Hardwired	None	3P	240/415V Wye <sup>(2)</sup>	64A	27 kW	48 (48/0/0)	69.4 x 4.1 x 2.5 in.
EMAGECC3C3C3C3L	MA	Hardwired	None	3P	240/415V Wye <sup>(2)</sup>	64A	27 kW	36 (24/0/12)	69.4 x 4.1 x 2.5 in.
EMAGECC4C4C4C4L	MA	Hardwired	None	3P	240/415V Wye <sup>(2)</sup>	64A	27 kW	24 (0/0/24)	69.4 x 4.1 x 2.5 in.
EMAGMFA5A2A5A2L	MA	4100P9W	6 ft.	3P	200-240V Delta	80A	33 kW	54 (42/0/12)	76 x 4.1 x 2.5 in.
EMAGMFA5A5A5A5L	MA	4100P9W	6 ft.	3P	200-240V Delta	80A	33 kW	48 (24/0/24)	76 x 4.1 x 2.5 in.
EMAGMFC2C2C2C2L	MA	4100P9W	6 ft.	3P	200-240V Delta	80A	33 kW	48 (48/0/0)	69.4 x 4.1 x 2.5 in.
EMAGMFC3C3C3C3L	MA	4100P9W	6 ft.	3P	200-240V Delta	80A	33 kW	36 (24/0/12)	69.4 x 4.1 x 2.5 in.
EMAGMFC4C4C4C4L	MA	4100P9W	6 ft.	3P	200-240V Delta	80A	33 kW	24 (0/0/24)	69.4 x 4.1 x 2.5 in.
EMAGKEA4A4A4A4L	MA	Hardwired	None	3P	200-240V Delta	100A	36 kW	48 (24/24/0)	76 x 4.1 x 2.5 in.
EMAGKEA5A2A5A2L	MA	Hardwired	None	3P	200-240V Delta	100A	36 kW	54 (42/0/12)	76 x 4.1 x 2.5 in.
EMAGKEA5A5A5A5L	MA	Hardwired	None	3P	200-240V Delta	100A	36 kW	48 (24/0/24)	76 x 4.1 x 2.5 in.
EMAGKEC2C2C2C2L	MA	Hardwired	None	3P	200-240V Delta	100A	36 kW	48 (48/0/0)	69.4 x 4.1 x 2.5 in.
EMAGKEC3C3C3C3L	MA	Hardwired	None	3P	200-240V Delta	100A	36 kW	36 (24/0/12)	69.4 x 4.1 x 2.5 in.
EMAGKEC4C4C4C4L	MA	Hardwired	None	3P	200-240V Delta	100A	36 kW	24 (0/0/24)	69.4 x 4.1 x 2.5 in.
<b>Metered Outlet HDX PDU G4 (Provides advanced remote management with outlet-level monitoring and without outlet-level control.)</b>									
EMOPFXTA2A2E4L	MO	560P6W	10 ft.	3P	240/415V Wye <sup>(2)</sup>	60A	20 kW	48 (42/6/0)	90.2 x 2.05 x 2.2 in.

**Eaton offers a full line of PDU accessories, including UPS systems, rack enclosures, environmental sensors, power cords, software and services. Learn more at Eaton.com.**

Due to continuous improvement programs, all specifications are subject to change without notice. (1) Stocked PDU with shorter lead time. Other PDUs listed are built to order. (2) Supports 220/380V Wye, 230/400V Wye and 240/415V Wye. (3) Derated current for corded PDUs is 80% of maximum current. (4) The C39 outlet combines the functionality of C13 and C19 outlets to accommodate both C14 and C20 plugs.

Learn more at: [Eaton.com/G4](https://Eaton.com/G4)

**Eaton**  
 1000 Eaton Boulevard  
 Cleveland, OH 44122  
 United States  
 Eaton.com

© 2025 Eaton  
 All Rights Reserved  
 Printed in USA  
 Publication No. BR155059EN / 25-01-254  
 March 2025

Eaton is a registered trademark.  
 All other trademarks are property of their respective owners.

Follow us on social media to get the latest product and support information.

