



Powering Business Worldwide

BACKED BY  
**Roadranger**  
SUPPORT

**Subject:** Advantage Automated Series 430MM Endurant HD/XD Clutch DDA Inspection

**Service Bulletin:** CLIB-0039

**Date:** April 2, 2024

**Updated:** April 8, 2024

---

**Issue Description:**

This document contains information pertaining to the Advantage Automated Series Endurant HD 430MM Driven Disc Assembly (DDA) warrantable and non-warrantable conditions.

The Endurant clutch 254mm driven disc can experience higher than expected wear rates on the stack plate and spring cover. Product improvements have occurred, and the issue is trending favorably with additional corrective actions being implemented in 2025.

**Containment/Corrective Action:**

Component level production source changed in 2019 and product design change to be implemented in 2025.

**Affected Models/Population:**

105510-1, 105510-5, 105510-7, 105511-1, 105511-5, 105511-7, 105550-CL-65, 105550-CL-70, 105551-CL-65, 105551-70

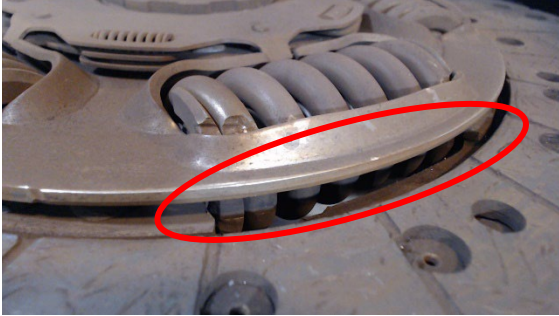
**Field Strategy:**

The below information is provided as reference for what when a technician in the field observes DDA wear. Part return may be requested.

**Warranty Information:**

**Examples - warrantable failures:**

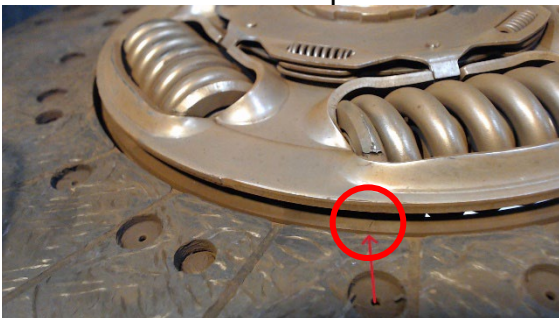
Broken stack plate



Broken spring cover

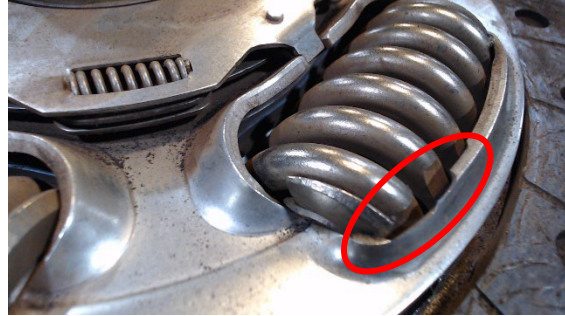


Cracked stack plate



**Example - not a warrantable failure:**

Worn spring cover



## Warranty Information:

### Criteria for warranty:

- Pictures of broken or cracked component.
- ServiceRanger Service Activity Report (SAR).

### Claim Inclusion: (If Warrantable)

- If installed original clutch is still within OEM Warranty, a claim must be filed through the OEM.
- All clutch parts must be returned to Eaton Warranty Return Center (Anderson, IN.) “Collect” by LTL Carrier listed per TMIB0129. Follow packaging instructions per TCWY0600.

### Warranty Parts:

- K-4488CL Clutch Service Kit (PACCAR X15 / PACCAR MX / Navistar X15 & A26 w/260mm Flywheel Bore Opening)
- K-4494CL Clutch Serviced Kit (DTNA/Volvo w/Cummins X15 260mm Flywheel Bore)
- K-4496CL Clutch Service Kit (DTNA w/Detroit Diesel Engines w/290mm Flywheel Bore)
- K-4512CL (Cummins CNG Engines)
- K-4514CL (PACCAR MX Engines w/290MM Flywheel Bore)
- A-10004341 Release Bearing (SAE)
- A-10004340 Release Bearing (ISO)

### Warranty Labor:

- Diagnostics: (1.0 hour)
- Clutch R&R – Includes transmission R&R: (OEM SRTs)
- Calibrate Clutch: (0.3 hour)
- Road Test: (0.3 hour)

### Warranty Coverage:

OEM published coverage or extended coverage with Eaton.

The material contained in this bulletin is product improvement information. Eaton is not committed to, or liable for, canvassing existing products.

## Change Log

| Date     | Description                  |
|----------|------------------------------|
| 4-2-2024 | Creation of Service Bulletin |