

All-in-one solution to meet multi-elevator disconnect requirements



The Bussmann series Power Module Switch is a ready-to-install elevator disconnect with popular configurations that can ship in three business days.

Eaton's Bussmann™ series Quik-Spec™ Power Module switch is an all-in-one elevator disconnect switch available in configurations to meet virtually any single elevator shutdown and disconnect requirement.

Easily selectively coordinated, this switch is the best choice for design engineers and electrical contractors that need to meet multiple code and agency requirements.

The switch is easily ordered following the build-a-code part number system that creates a ready-to-install unit.

The switch reduces time and labor by only requiring mounting and electrical connections.

Features and benefits

- The switch utilizes Bussmann series Low-Peak™ Class J fuses to easily meet requirements for selective coordination following a simple 2:1 lineside to loads side amp ratio with any other Low-Peak fuse.
- UL® 98 Listed and meets prevailing American National Standard Institute (ANSI), American Society of Mechanical Engineers (ASME), NEC® and NFPA® 72 requirements, and is Uniform Building Code (UBC) and California Building Code (CBC) seismic qualified, and IBC® approved.
- Choice of standard NEMA® 1, 3R, 12 and 4 enclosures meet environmental requirements.
- Popular configurations are available for shipment in three business days with our QuikShip Everyday Service.



Powering Business Worldwide

Specifications

- For single elevator applications
- 600 Vac, 3-phase
- 30 to 400 amps
- NEMA 1, 3R, 12 and 4 enclosure options
- Optional 50 kA Type 1 SPD

Complies with the following codes and standards

- Elevator shutdown
 - ANSI/ASME A17.1, 2.8.3.3.2
 - NEC 620.51(B) (elevator shutdown)
 - NEC 240.12 (orderly shutdown)
- Shunt trip voltage monitoring
 - NFPA 72, 6.16.4.4
- Selective coordination
 - NEC 620.62
- Auxiliary contact (hydraulic elevator)
 - NEC 620.91(C)

Power Module switch at-a-glance

Triple padlock lockout/tagout with up to three 1/4" shank padlocks

Optional key test switch and optional pilot light

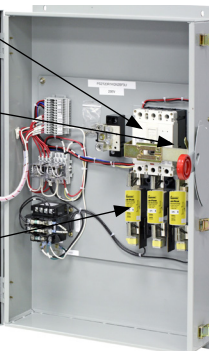
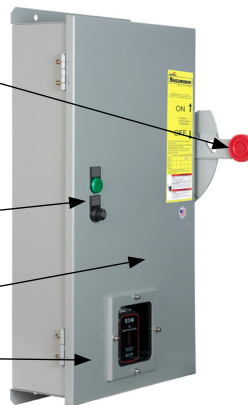
NEMA 1, 3R, 12 or 4 enclosures

Surge protection device

Shunt trip system is internally powered and relay activated

Auxiliary contacts are mechanically interlocked for increased reliability

Circuit protection with Bussmann series Class J Low-Peak fuses (order separately)



Both Quik-Spec Power Module switches and panels provide:

- Shunt trip capability
- Selective coordination to meet code requirements
- Fire safety signal interface
- Shunt trip voltage monitoring
- Component protection with Low-Peak Class J fuses
- UL 98 Listed for 200 kA short-circuit current rating
- Optional key-test switch and optional pilot light for easy inspection
- No annual calibration or testing of overcurrent protection required
- Lockable in the OFF position with three-lock capability
- Padlockable for service work safety and open door "override"

Quik-Spec Power Module switch catalog number system

Use this build-a-code to specify the exact power module switch you need.

PS	1	T48	R1	K	G	N1	D	F1	U
Prefix PS = Power Module Switch	Amp rating 3 = 30A 6 = 60A 1 = 100A 2 = 200A 4 = 400A	Control transformer* T20 = 208V T24 = 240V T48 = 480V T60 = 600V	Fire safety interface relay (3PDT, 10A, 12V) R1 = 120Vac coil R2 = 24Vdc coil	Key test switch (optional) K = key	Pilot light ON (optional) G = green R = red W = white	Neutral lug (optional) N6 = 30-60A N1 = 100A N2 = 200A N4 = 400A	Auxiliary contacts and surge protection B = Additional 2NO/2NC Auxiliary contacts D = Additional 2NO/2NC Auxiliary contact and surge protection	Fire alarm voltage monitoring relay (optional) To monitor shunt trip voltage F1 = 1- pole relay F3 = 3- pole relay**	Enclosure † = Type 1 U = Type 3R Z = Type 12 Y = Type 4

* 100VA with primary and secondary fusing (120V secondary)

** For use only with R1 option

† Type 1 standard, no suffix designator required.

See data sheet No. 1145 for more information.

Three-day QuikShip program

Ship-direct service within three business days for Power Module switches is available for the following catalog numbers (-X suffix indicates QuikShip service):

Power module switch*		
Catalog number	Amps	Volts
PS6T48R1KGBF3-X	60A	480V
PS1T48R1KGBF3-X	100A	480V
PS1T20R1KGBF3-X	100A	208V
PS2T48R1KGBF3-X	200A	48V
PS2T20R1KGBF3-X	200A	208V

Eaton
1000 Eaton Boulevard
Cleveland, OH 44122
United States
Eaton.com

Bussmann Division
114 Old State Road
Ellisville, MO 63021
United States
Eaton.com/bussmannseries

© 2020 Eaton
All Rights Reserved
Publication No. 10268
January 2020

Eaton, Bussmann, Low-Peak and Quik-Spec are valuable trademarks of Eaton in the U.S. and other countries. You are not permitted to use the Eaton trademarks without prior written consent of Eaton.

IBC is a registered trademark of the International Code Council.
NEC is a registered trademark of the National Fire Protection Association, Inc.
NEMA is a registered trademark of the National Electrical Manufacturers Association.

UL is a registered trademark of the Underwriters Laboratories, Inc.
NFPA is a trademark of National Fire Protection Association.

For Eaton's Bussmann series product information, call 1-855-287-7626 or visit: Eaton.com/bussmannseries

Follow us on social media to get the latest product and support information.

