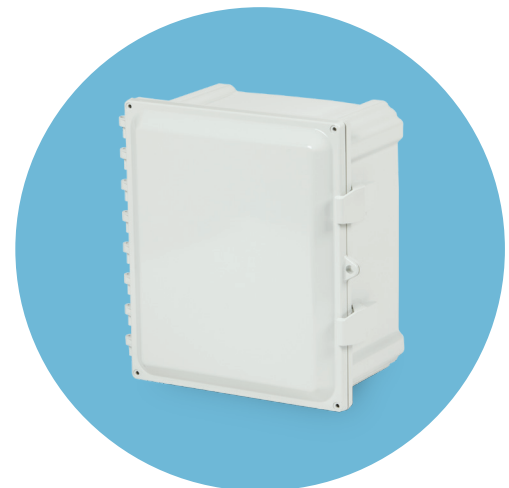


# AirLink® MP70 high performance Wi-Fi hotspot

The AirLink® MP70 is a high performance, LTE-Advanced Pro Wi-Fi router developed specifically for mission critical applications. MP70 is offered in both indoor and outdoor rated kits that provide reliable cellular connectivity for Green Motion EV smart breaker chargers and other Eaton commercial chargers.

## Key features:

- Rugged enclosure for outdoor use
- Reliable cellular connectivity for higher up time
- High performance LTE router
- Designed for mission critical applications
- Secure intelligent communications
- Reduces primary network traffic
- Convenient 120Vac adapter for easy installation
- 3-year warranty and technical support
- Cellular connectivity for up to 10 EV chargers



Outdoor enclosure



*Powering Business Worldwide*

# FAQs

## What are catalog numbers of the Wi-Fi hotspots available?

Below are the two options available for Wi-Fi Hotspots.

1. GMEVMP70-OUT: Outdoor rated Kit with Sierra Wireless MP70 Wi-Fi Router
2. GMEVMP70-IND: Indoor Rated Kit with Sierra Wireless MP70 Wi-Fi Router

## What mounting options are available for these Wi-Fi hotspots?

Indoor kit is primarily the MP70 module in its own enclosure. This can be mounted on table top or on walls.

Outdoor kit comes in an outdoor rated (NEMA 4X) enclosure. This can be mounted conveniently on the wall closer to the EV chargers.

## Do the Wi-Fi hot-spots come with a SIM card?

Yes, MP70 routers in both kits come with a SIM card in them.

## What cellular carriers are supported with these Wi-Fi hotspots?

Wi-Fi hotspots come with a 'Solve Networks' multi-network SIM that enables carrier selection between Verizon, AT&T, T-Mobile support and automatic locking provide additional safety.

## Can customers use these Wi-Fi hotspots and a SIM card of their choice? Are there any constraints?

Yes, customers have the option to use their own SIM cards. They will require to install these themselves and re-programming the Wi-Fi hotspot is required to enable the SIM. Contact our technical support with any additional questions.

## How many EV chargers can be supported on a single Wi-Fi hotspot?

Each Wi-Fi hotspot can support up to 10 EV chargers.

## What is estimated monthly carrier fee for each Wi-Fi hotspot?

Average carrier fee per Wi-Fi Hotspot is around \$12/month. This includes 100 MB of data.

## Are there any other recurring fees besides default carrier charges?

If usage is over the default 100 MB of data, then overage charges apply which are around \$0.10/MB

## What kind of technical support is available for these products?

- Eaton tech support is available M-F, 8am-5pm EST
- INS (Sierra) support is available M-F, 8am-5pm CST

## Does this hotspot work with EV chargers from companies other than Eaton?

Yes. MP70 is a generic, industrial grade, off-the-shelf Wi-Fi hotspot. It will work with any EV chargers supporting Wi-Fi.

## How can we manage all the Wi-Fi hotspots on our site? Is there a dashboard?

Yes, customers can monitor their EV chargers through Semtech ALMS (Airlink Management Services).

For additional details, refer to this link: (<https://www.sierrawireless.com/router-solutions/alms/#overview>)



## Technical specification

<b>Catalog number</b>	- GMEVMP70-OUT, GMEVMP70-IND
<b>Input voltage</b>	- 7 to 36 VDC
<b>Operating temperature</b>	- -30°C to +70°C
<b>WiFi</b>	- Dual Band 2.4/5GHz; 802.11 b/g/n/ac; WPA2 Enterprise
<b>Regulatory</b>	- FCC, IC, PTCRB, R&TTE, GCF, CE
<b>Carriers</b>	- Verizon, AT&T, Sprint, Rogers, Telus, Bell, SouthernLinc

## CATALOG & DESCRIPTION

### GMEVMP70-OUT

- Outdoor Rated Kit with Sierra's MP70
- Wi-Fi Router
- Dimensions: 14" x 12" x 6"

### GMEVMP70-IND

- Indoor Rated Kit with Sierra's MP70
- Wi-Fi Router
- Dimensions: 7.5" x 1.75" x 4.1"

EV Charging stations sold separately



Scan for full MP70 spec sheet from Sierra Wireless.

Contact the Eaton Technical Resource Center at

**1-877-ETN-CARE (386-2273)**

option 2, option 9 for further assistance.