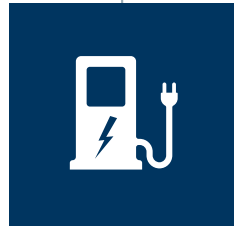
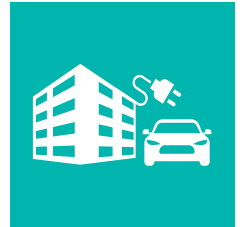
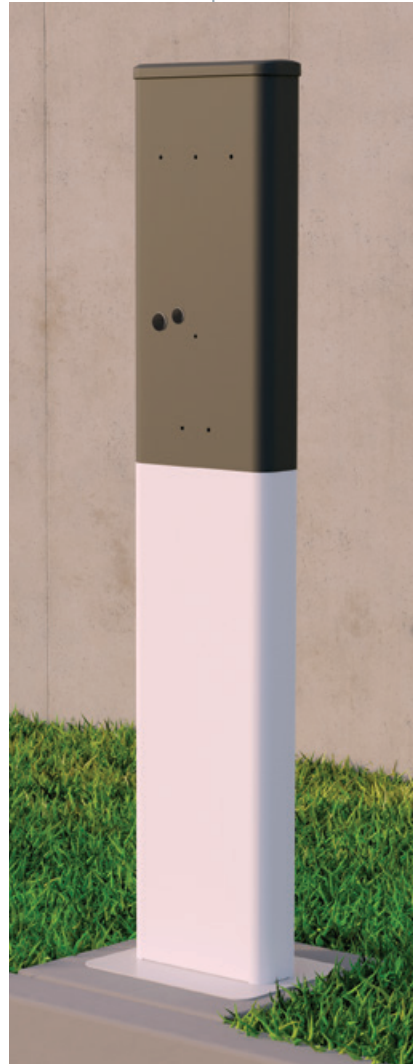


EV single and dual pedestals

Eaton Green Motion EV pedestals offer a compact design and robust construction in both single and dual mount options.

These pedestals are ideal for covered garages and outdoor parking lots. For larger installations, dual mount pedestals reduce overall cost of installation and maintenance. The universal design is compatible with Eaton's full portfolio of Level 2 AC chargers.

- Powder-coated stainless steel for durability, heavy-duty, 14 gauge
- NEMA 3R rated
- Includes cord hook for cable organization
- UL certified and ADA compliant
- For use with GMEV32BR-WC, GMEV40CME1B-WC, GMEV40CMC1B-WC, GMEV48CME1-WC, MEV48CMC1-WC, GMEV80CME1B-WC, GMEV80CMC1B-WC, MEV80CME1-WC, GMEV80CMC1-WC (charging stations sold separately)



Powering Business Worldwide



Pedestal options

CATALOG & DESCRIPTION

EV single port pedestal (1) GMEV-PED

- Requires (1) charging station sold separately)

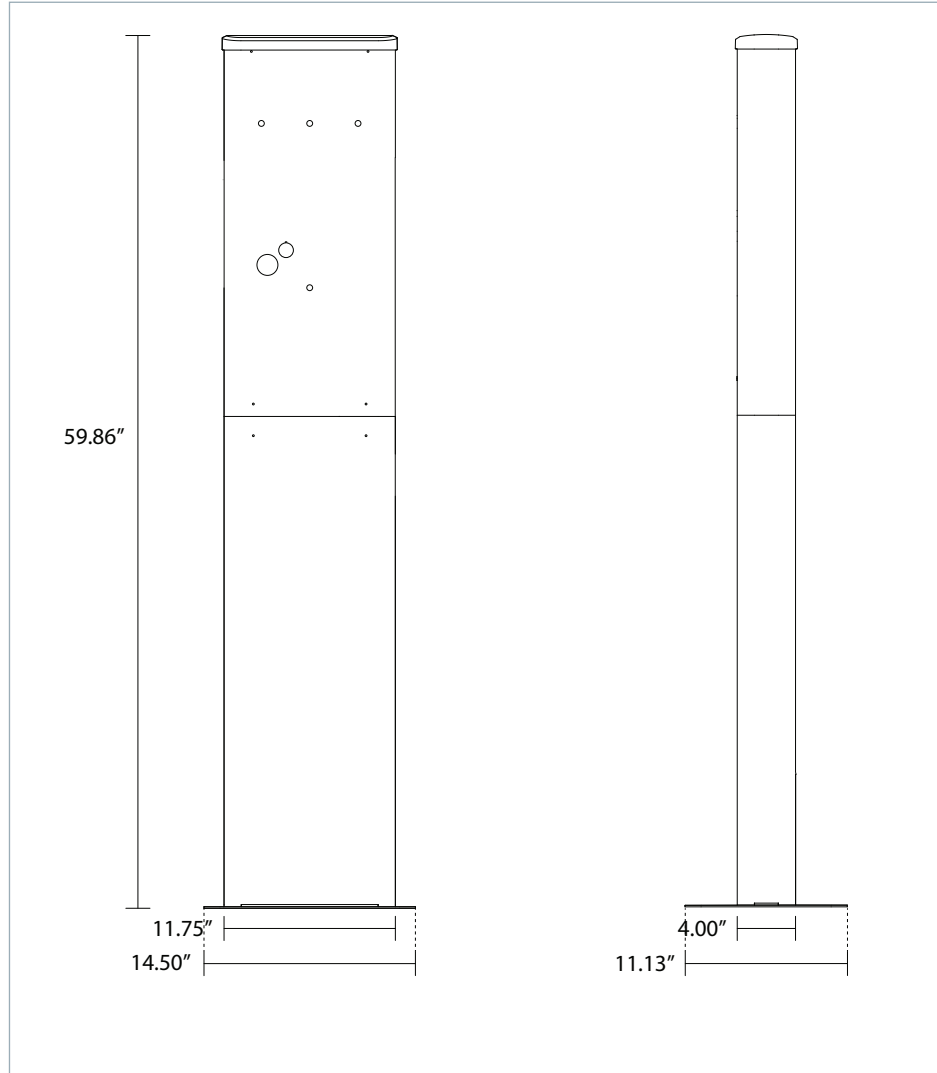
EV dual port pedestal: (1) GMEV-DPED

- Requires (2) charging station(s) sold separately

Technical specification

Installation	– EV chargers hard-wired through pedestal
Catalog numbers	– GMEV-PED, GMEV-DPED
Certifications	– UL1773
Warranty	– 3 years

Product dimensions



Contact the Eaton Technical Resource Center at

1-877-ETN-CARE (386-2273) option 2, option 9 for further assistance.