

XT compact combination starter

General description

The XT compact combination starter is a UL® 508A Type F combination starter consisting of a contactor and a manual motor protector (MMP). Standard features include a control power transformer (CPT), Hand-Off-Auto selector switch, red RUN pilot light, and I/O terminal blocks.

All units are enclosed in a wall-mounted enclosure using either a plastic cover or a metal door.

Line voltage—Available ratings are 208 V, 240 V, 480 V, and 600 V, three-phase

Control voltage—120 V or 24 V (CPT included)

Amperage—Overload range of 1–52 A (40 hp)

Short-circuit interrupting ratings—

- 65 kAIC at 208 V, 240 V, and 480 V
- 18 kAIC to 9 A, 30 kAIC to 22 A, and 50 kAIC to 32 A at 600 V

Enclosure ratings—Type 1, 3R, or 12

Certifications—  

Identification

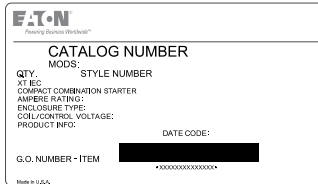


Figure 1. Package label

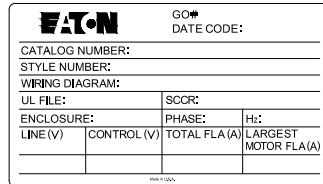
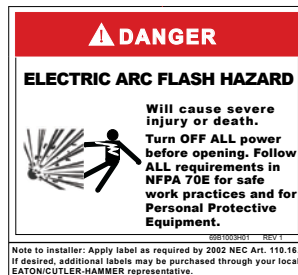
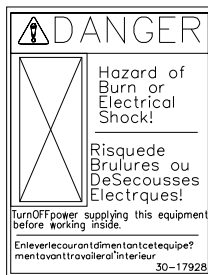


Figure 2. Product label

Safety

Read and follow all safety information shown in the Instruction Leaflet and that is provided with each unit.



Mounting and conduit

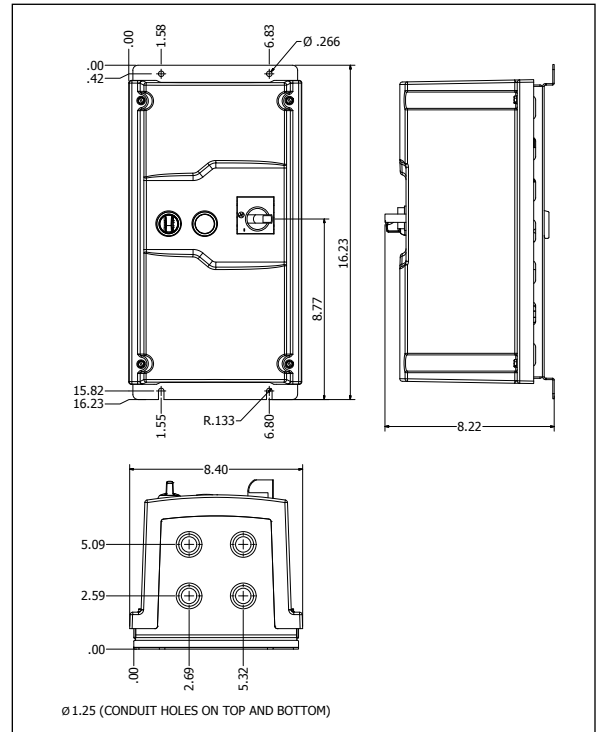


Figure 3. Type 1 (plastic)

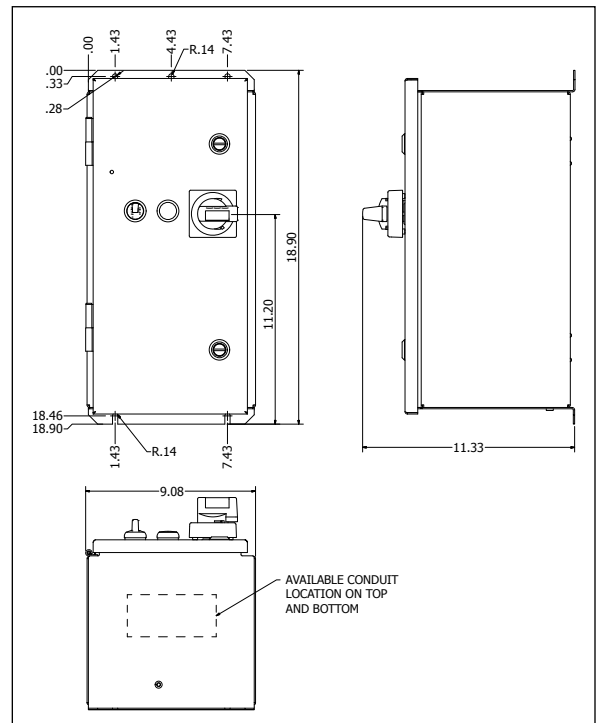


Figure 4. Type 3R/12

Installation

Connect the incoming power leads to terminals L1, L2, and L3 on the MMP. Input wiring points have labels to help locate the terminals.

Basic operation

The selector switch has three modes of operation: HAND, OFF, or AUTO.

HAND: When in HAND mode, the contactor (M) will close and energize the motor.

OFF: When in OFF mode, the contactor (M) is open.

AUTO: When in AUTO mode, the starter is controlled by a remote device.

Pilot light

Red RUN: When the pilot light is illuminated, the contactor is engaged and the motor is running.

Wiring schematic

The wiring diagram shown in **Figure 5** is standard without BACnet. For BACnet wiring diagram, please refer to the XT compact combination starter with BACnet instruction leaflet, PUB53897.

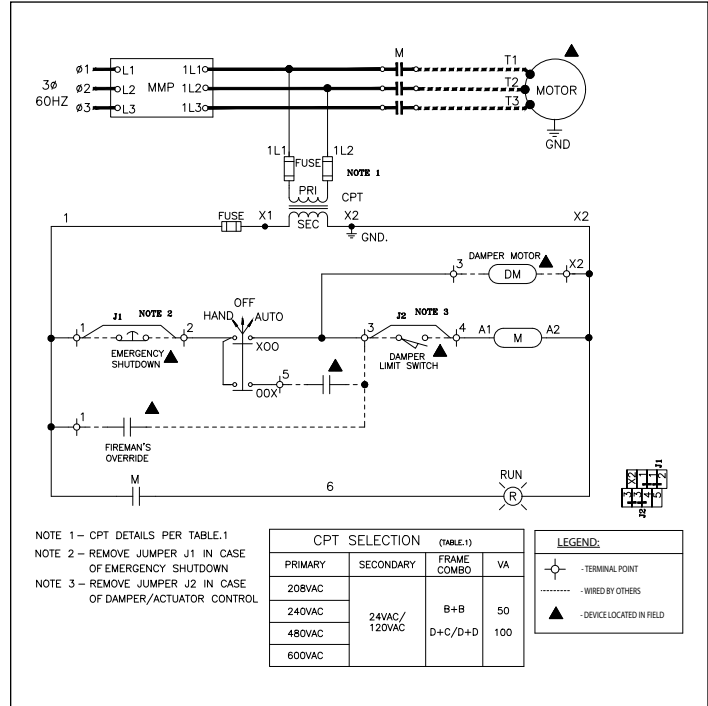


Figure 5. Standard unit

Power wiring

MMP frame	Wire type	OL range (amps)	AWG wire	Torque (lb-in)	Contactor frame	Range (amps)	AWG wire	Torque (lb-in)
B	Cu	1-12	18-10 ①	15	B	1-12	18-14 ①	10.6
D	Cu	10-52	14-2 ①	26.6	C	16-32	14-8 ①	26.6
D	Cu	10-52	14-2 ①	26.6	D	32-65	14-1 ①	29.2

① Maximum of two wires per phase.

Control wiring

Control	Feature	Terminal no.	Jumper no.	Contact type	Description
Input	Emergency shutdown	1 and 2	J1	Normally Closed (NC) Dry Contact	When opened, the contactor will de-energize and will not be able to accept RUN command either in HAND or AUTO mode (except for Fireman's Override)
	Fireman's override	1 and 3	—	Normally Open (NO)	When closed, the motor will run irrespective of Emergency Shutdown
	Damper limit switch	3 and 4	J2	Normally Open (NO) Dry Contact	Contact is used in series with contactor coil, which interlocks with the starter to remain OFF until the actuator is in position
	Auto run	5 and 3	—	Normally Open (NO) Dry Contact	When RUN command is received, starter will be ON when in AUTO mode
Output	Damper motor supply	3 and X2	—	—	For MMP Frame B: 24 Vac, 1 A maximum; 120 Vac, 0.2 A maximum For MMP Frame D: 24 Vac, 2 A maximum; 120 Vac, 0.4 A maximum

Note: Use wire AWG 16 with torque value between 5.3-7.1 lb-in.

For more information and product support:
Eaton.com/xtcompact
877-386-2273, option 2 then option 1
trc@eaton.com

Eaton
 1000 Eaton Boulevard
 Cleveland, OH 44122
 United States
 Eaton.com

© 2021 Eaton
 All Rights Reserved
 Printed in USA
 Publication No. PUB53892 / Z23992
 December 2021



Eaton is a registered trademark.

All other trademarks are property of their respective owners.