

10 CGLine+ Touchscreen Controller

The CGLine+ Touchscreen Controller combines the Web Controller and a 10-inch touchscreen in a single housing. This product combines the power of the Web Controller (monitoring of up-to 800 self-contained luminaires) with the ease of using an intuitive touchscreen interface.

This enables visualisation of the status of all luminaires connected to the system.

There are three Touchscreen Controller packages available:

1. CGL+ CGVision Touchscreen S/Controller

- CGLine+ Web Controller
- 10.1 Inch Touchscreen
- CGVision Touchscreen Software

This Touchscreen package allows full configuration and visualisation of a single CGLine+ system.

2. CGL+ CGVision Touchscreen G/Controller

- CGLine+ Web Controller
- Ethernet connection
- 10.1 Inch Touchscreen
- CGVision Touchscreen software

This Touchscreen package allows full configuration and visualisation of the integrated CGLine+ Web Controller and up-to 9 external Web Controllers via ethernet.

3. CGL+ Web Touchscreen Controller

- CGLine+ Web Controller
- Ethernet connection
- 10.1 Inch Touchscreen
- Embedded Web-browser

This Touchscreen package is compatible with central CGVision software and allows full configuration and visualisation of the integrated CGLine+ Web Controller and up-to 32 external Web Controllers via Ethernet.

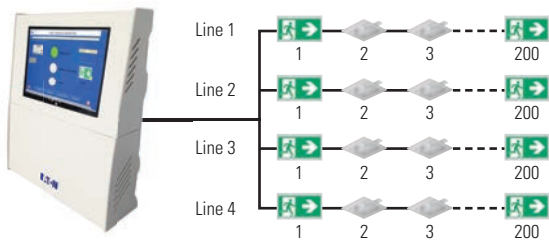
Building layouts can be uploaded for enhanced identification of luminaires.



 Do not connect a CGVision Touchscreen Controller with a CGVision PC



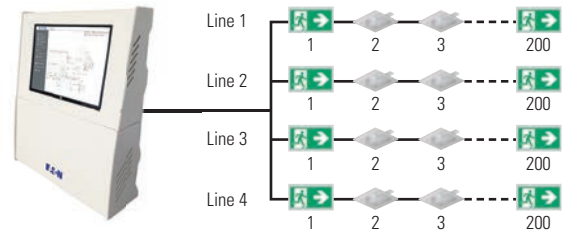
1. Stand-alone visualisation



CGL+ CGVision Touchscreen S/Controller

- Visualisation with CGVision Touchscreen software

OR

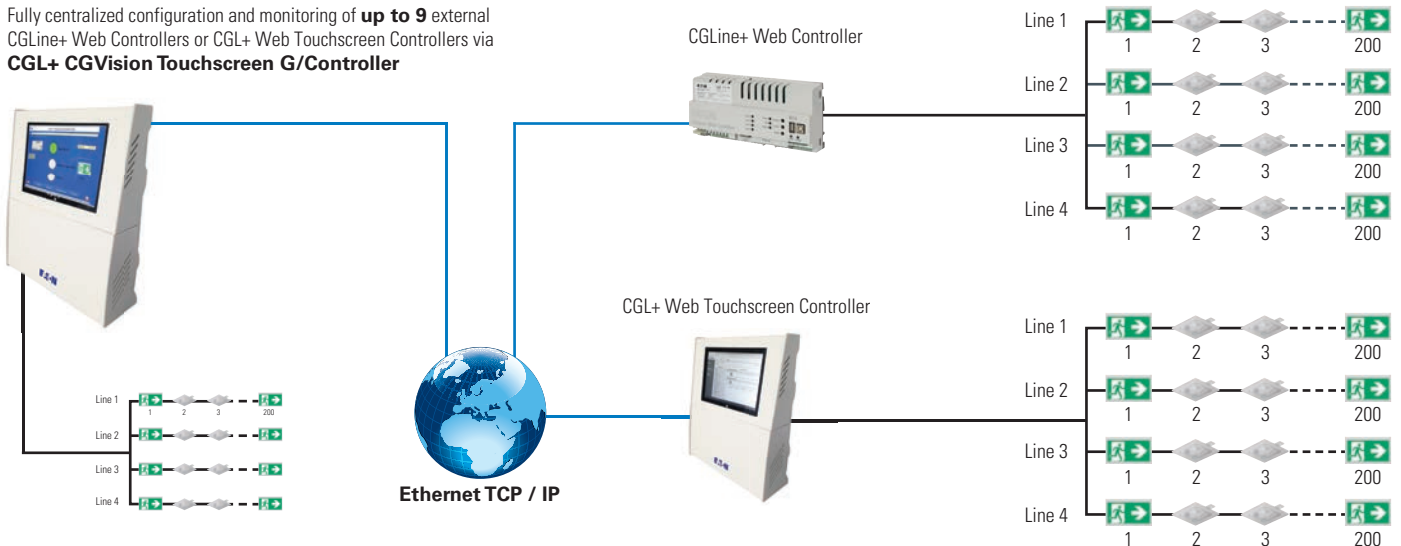


CGL+ Web Touchscreen Controller

- Web based visualisation
- Building layout functionality

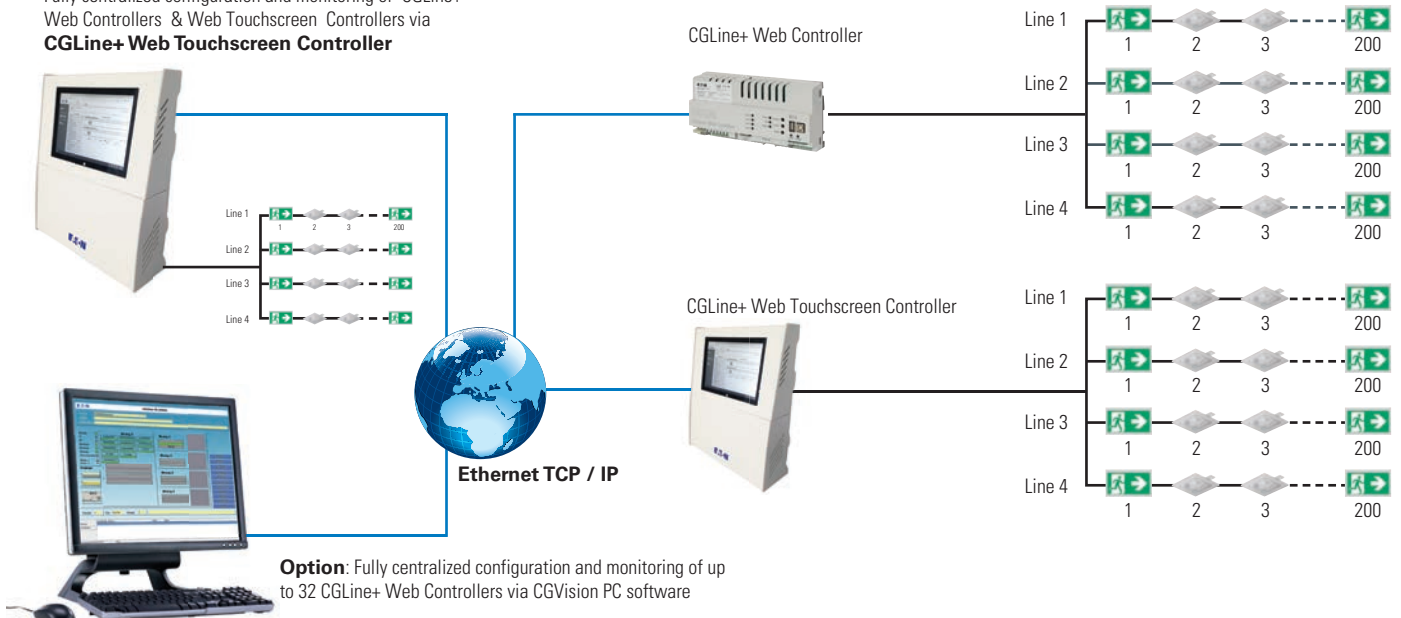
2. Group visualisation with CGL+ Touchscreen G/Controller

Fully centralized configuration and monitoring of **up to 9** external CGLine+ Web Controllers or CGL+ Web Touchscreen Controllers via **CGL+ CGVision Touchscreen G/Controller**



3. Web-based group visualisation with CGLine+ Web Touchscreen Controller

Fully centralized configuration and monitoring of CGLine+ Web Controllers & Web Touchscreen Controllers via **CGLine+ Web Touchscreen Controller**

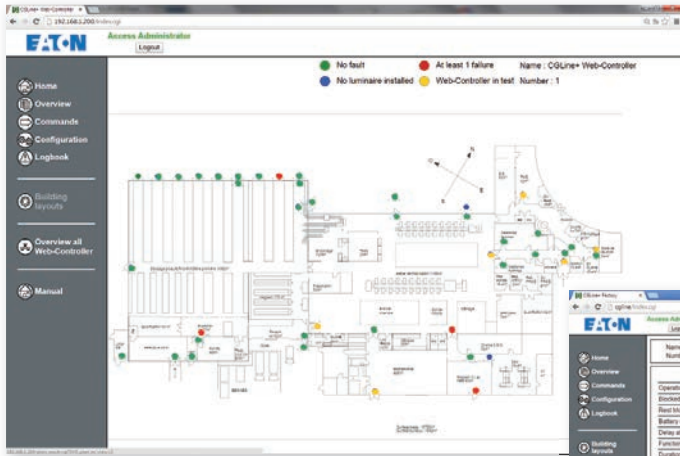


Option: Fully centralized configuration and monitoring of up to 32 CGLine+ Web Controllers via CGVision PC software

10.4 Ease of Visualisation

CGLine+ Touchscreen Controller

CGLine+ Web-based visualisation

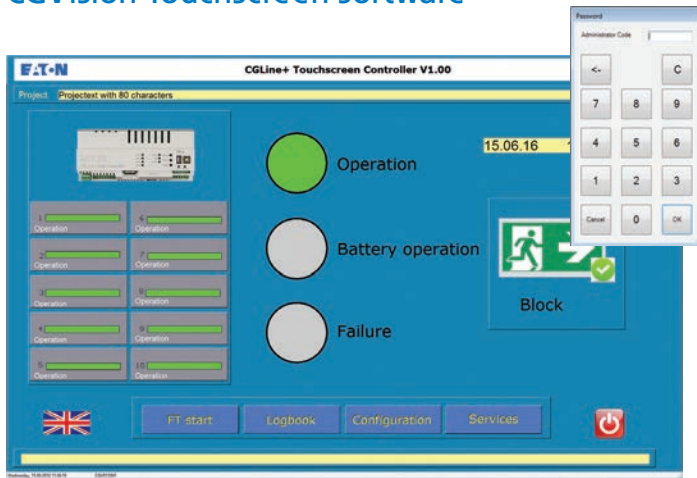


Fully centralized monitoring of up to 10 CGLine+ Web Controllers and Web Touchscreen Controllers:

- Secure access with username and password
- Building layout display
- Blocking / Rest mode function for all luminaires
- Manual function and duration tests (all, group or single luminaire)
- Logbook stores events and test results for a minimum of 4 years in compliance with standards.
- Customisable automatic E-Mail dispatch if faults occur
- Full description of the system : See page 154 to 159



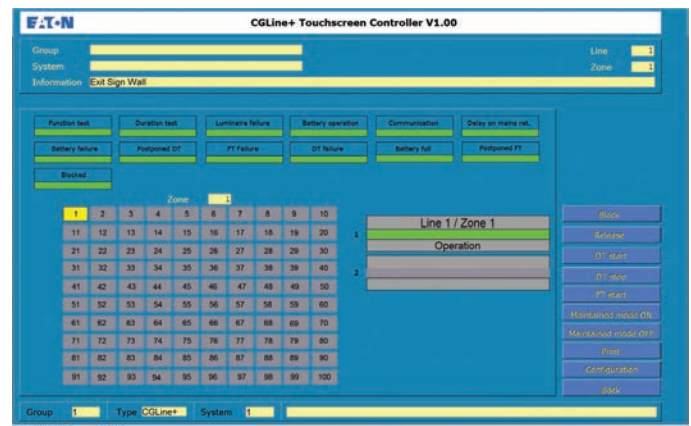
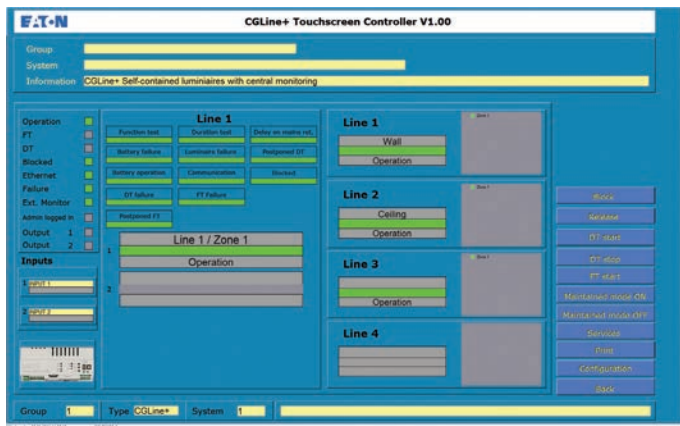
CGVision Touchscreen software



Home screen:

- Sum status display of up to 10 CGLine+ Web Controller and all luminaires (Operation, Battery operation, Sum Failure)
- Blocking / Rest mode function for all luminaires with PIN code protection
- Manual function and duration test of all luminaires
- Logbook stores events and test results for a minimum of 4 years in compliance with standards.
- Easy selection between 19 user languages

⚠ Do not connect a CGVision Touchscreen Controller with a CGVision PC



System screen:

- Overview of the system

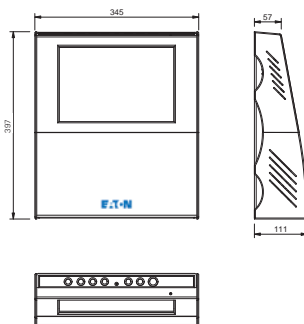
Zone screen:

- Overview of the zone

CGLine+ Touchscreen Controller



Dimensional drawing Controller, data in mm



CGLine+ Touchscreen Controllers

- 10,1 inch Touchscreen IPS display with WIN10
- For connecting up to 800 luminaires in max. 4 lines
- Unique ID per luminaire assigned by the manufacturer
- Automatic luminaire search function requiring no manual addressing
- Simple sorting using unrestricted short address assignment
- Unrestricted entry of target location names for the luminaires with up to 20 characters
- Clearly-shown allocation of luminaires to up to 16 zones per line
- Automatic function and duration test of luminaires, with customisable time/date settings
- Up to 8 test groups per luminaire can be defined for the function test (FT) and duration test (DT)
- Electronic log book storage for a period of minimum 4 years
- Blocking the emergency lighting function during non-operational periods (all / per bus line/ per zone / per luminaire)
- Luminaires in maintained mode switchable (all / per bus line / per zone / per luminaire)
- Compliant with the highest industry cybersecurity requirements
- Password protected access as an administrator or user
- Visualisation of luminaires in up to 30 different building layouts
- Efficient and convenient analysis of the log book using the CGLine+ PC software
- Luminaire replacement with webserver for easy maintenance

10

CGL+ CGVision Touchscreen S/Controller - Specific features :

- CGVision Touchscreen Software allows full configuration and visualisation of the integrated CGLine+ Web Controller.

CGL+ CGVision Touchscreen G/Controller - Specific features :

- Ethernet connection
- CGVision Touchscreen Software allows full configuration and visualisation of the integrated CGLine+ Web Controller and up to 9 external controllers/installations via ethernet.
- E-mail service for sending automatic e-mail in case of malfunctions to up to 10 e-mail addresses, assignable and 2 escalation groups

CGLine+ Web Touchscreen Controller - Specific features :

- Ethernet connection
- Web-browser allows a visualisation of the integrated CGLine+ Web Controller and up to 9 external connected CGLine+ Web Controller via ethernet.
- Easy access web-based visualisation
- Building layouts could be loaded and used to localized faulty luminaires.
- Compatible with central CGVision software.
- E-mail service for sending automatic e-mail in case of malfunctions to up to 10 e-mail addresses, assignable and 2 escalation groups

Dimensions in mm (H x W x D)	345 x 397 x 111
Housing type	Plastic, wall-mounted housing
Power supply	230 V AC, 50/60 Hz
Power consumption	< 12 watts standby < 38 watts full load
Connection terminals	max. 2.5 mm ² flexible
Permissible Ambient temperature	0 ° to 35 °C
Storage temperature	0 ° to 35 °C
Degree of protection	IP 20

Ordering details

Type	Scope of supply	Order No.
CGLine+ Web Touchscreen Controller	Web-based visualisation via integrated web-browser of any no. of networked CGL+ Web Touchscreen Controller or CGLine+ Web Controller. A networked CGVision PC allows a full configuration and monitoring of up to 32 CGLine+ Controllers	40071361056
CGL+ CGVision Touchscreen S/Controller	CGL+ CGVision Touchscreen S/Controller: Stand alone operation with full configuration and monitoring	40071361083
CGL+ CGVision Touchscreen G/Controller	CGL+ CGVision Touchscreen G/Controller: Group visualisation with full configuration and monitoring of up to 9 external CGL+ Controllers	40071361084

Accessory

Type	Scope of supply	Order No.
CGLine+ PC software	on CD-ROM	40071361178